

The background features a grid of orange and yellow circles of varying sizes, with thin white lines intersecting them. A large, semi-transparent orange circle is positioned in the upper left quadrant, with several thin white lines radiating from its center towards the right side of the slide.

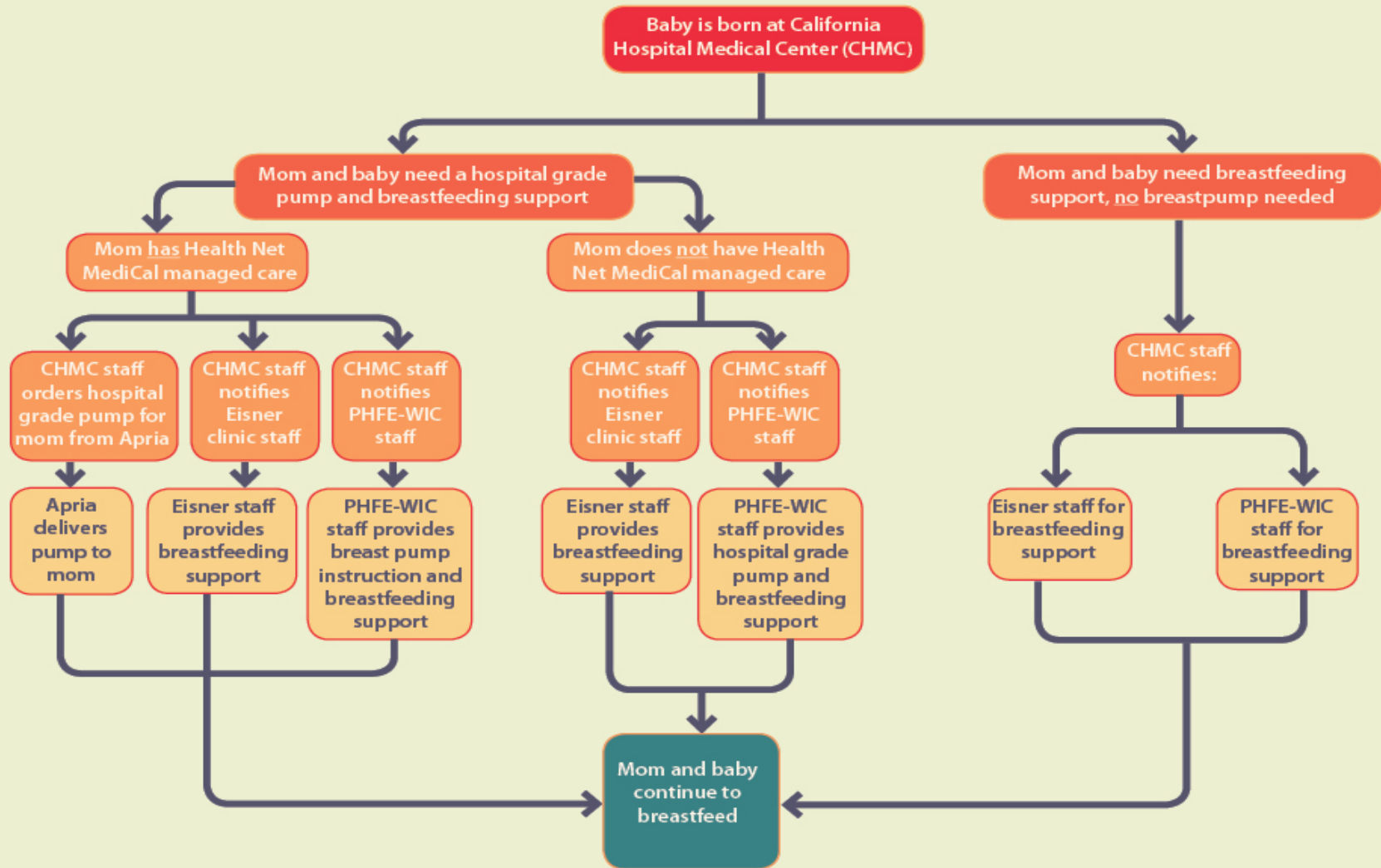
**INNOVATION**

**NICU Breast Pump Pilot Program**  
**California Hospital Medical Center**

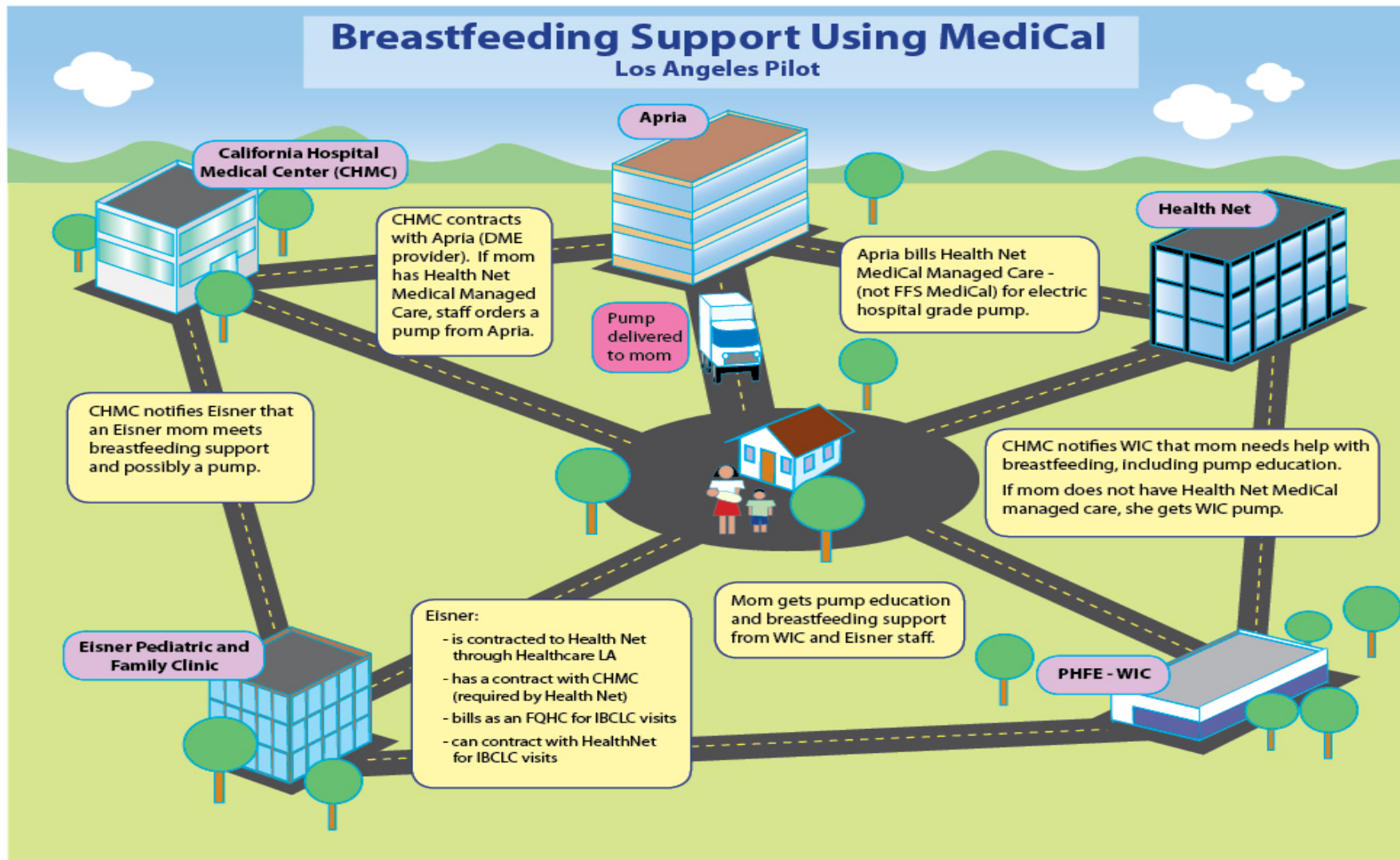
# Collaborators

- Breastfeeding Taskforce of Greater LA
- Eisner Pediatric & Family Medical Center
- California Hospital Medical Center
- Health Net
- Apria (DME provider)
- PHFE-WIC
- California WIC Association

## Breastfeeding Support Using MediCal Los Angeles Pilot



## Breastfeeding Support Using MediCal Los Angeles Pilot



**INNOVATION**

# For Patients with Health Net MCal ONLY

## ■ Step One

- Obtain physician order for “stat” breast pump
- Obtain mother’s consent for disclosing PHI
- FAX the order and mother’s face sheet to Apria Healthcare

## ■ Step Two

- Obtain mother’s consent for disclosing PHI
- Fill out and FAX **WIC Referral Form** –mark that mother will receive Apria pump

# NICU Breast Pump Pilot Protocol

- CHMC staff orders hospital grade pump for mom from Apria
- Apria promptly delivers hospital grade pump to mom
- CHMC staff notifies Eisner Clinic staff who provide BF support
- CHMC staff notifies PHFE-WIC staff who provides breast pump instruction and BF support
- **Result:** Mom continues to breastfeed

# “Show me the money!”

- Eisner is contracted with Health Net through Healthcare LA
- Eisner has a contract with CHMC (required by Health Net)
- Eisner bills as an FQHC for IBCLC visits
- Apria bills Health Net for electric hospital grade pump

# INNOVATION



Increasing the Rate of Exclusive  
Breastfeeding  
LA Best Babies Network

# Increasing Access to BF Education and Support

- Statewide
  - Executive director appointed to CA BFR
- Prenatal Care Quality Improvement
  - Over 15-month period, the percentage of women initiating exclusive BF rose from 25% to 80%.
  - LABBN supported training of at least one CLE from each clinic

# Increasing Access to BF Education and Support

- Intensive case management
  - Breastfeeding initiation among BBC clients more than doubled, reaching the Healthy People 2010 goal of 75%.
  - LABBN supported the training of some case managers to become CLEs
- Home visitation through *Welcome, Baby!*
  - All home visitors and hospital liaisons have at least a CLE
  - 72 hr nurse home visit

# Increasing Access to BF Support

- Advocating for working mothers
  - *Breastfeeding-Friendly Workplace Policies in English and Spanish*

The background features a grid of orange and yellow circles of varying sizes, with thin white lines crisscrossing the scene. A large, semi-transparent orange circle is positioned in the upper left quadrant, containing the word 'INNOVATION'.

**INNOVATION**

**Baby-Friendly Hospital Initiative**  
**California Hospital Medical Center**

# First 5 LA Best Start LA Baby-Friendly Hospital Initiative

- Hired Lily Morales, BS, CHES, IBCLC
- Began offering BF classes for prenatal patients and BF Support Groups in Feb 2010
- Finished training all perinatal nurses by March 2010
- Over half of NBs placed skin-to-skin after delivery
- 62% of term babies delivered vaginally and 54% of term babies delivered by CS that were placed skin-to-skin after delivery BF during the first hour
- Exclusive BF rate ~46%; formula only 8%.
- 76% of NICU babies receive breast milk

# Next Steps

- Locking up formula
  - Only dispensed with physician order
  - Must document rationale
- Challenges
  - Educating physicians
  - Supplementation
    - Late PTBs
    - Jaundice